



GAT MONTHLY MEMBERSHIP PROGRESS REPORT

Results as of: 1/31/2022

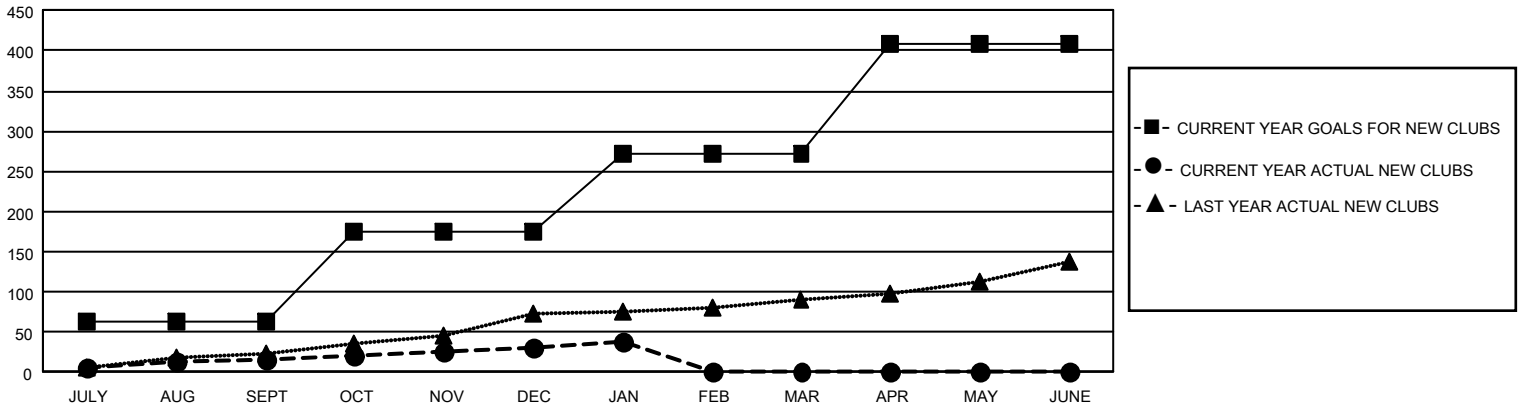
GAT Constitutional Area 1

REPORT DOES NOT INCLUDE CLUBS IN UNDISTRICTED AREAS.

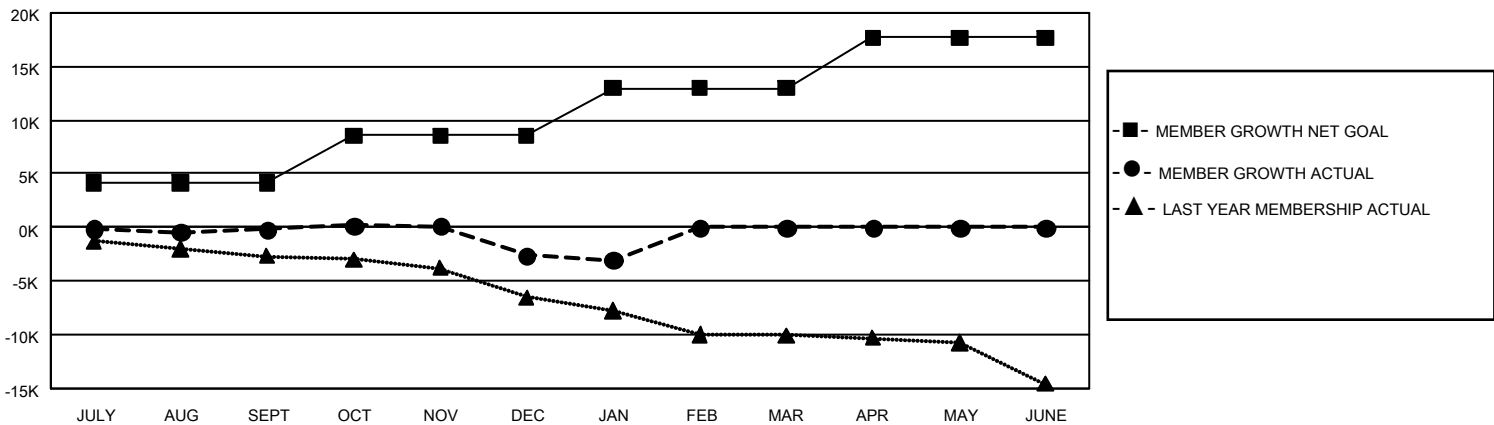
Clubs			
RESULTS FOR 2021-2022			
QUARTER	NEW CLUB GOAL	NEW CLUBS	DROPPED CLUBS
JULY/AUG/SEPT	192	16	127
OCT/NOV/DEC	330	16	114
JAN/FEB/MAR	294	7	24
APR/MAY/JUNE	411	0	0

Members			
RESULTS FOR 2021-2022			
QUARTER	MEMBER GROWTH NET GOAL	MEMBER GROWTH ACTUAL	DROPPED MEMBERS ACTUAL (including transfers)
JULY/AUG/SEPT	4133	8,772	7,719
OCT/NOV/DEC	4409	7,892	9,582
JAN/FEB/MAR	4451	2,767	2,757
APR/MAY/JUNE	4727	0	0

GOALS AND ACTUAL NEW CLUBS CUMULATIVE



GOALS AND ACTUAL MEMBERS CUMULATIVE



DROPPED CLUBS: 265	
DROPPED MEMBERS	
DECEASED	2,937
CLUB CANCELLED	2,014
OTHER	15,104
TOTAL	20,055

4,889 CLUBS OF 10,659 ADDED 1 OR MORE NEW MEMBERS

[CLICK HERE FOR CUMULATIVE MEMBERSHIP DATA](#)

GENDER DISTRIBUTION	
MALE	177,869 (65.17%)
FEMALE	95,020 (34.81%)
NON BINARY	4 (0.00%)
PREFER NOT TO ANSWER	45 (0.02%)
TOTAL FAMILY UNIT MEMBERS	52,457
FAMILY MEMBERS PAYING HALF DUES	26,960